

Technical Specifications

HoloMonitor® M4

Light source: External laser unit
Sample illumination: 635nm, 0.2mW/cm²
Objective: 20x
Lateral resolution: 1 μm
Field of view: 567 μm × 567 μm
Working distance: 0.5 – 2 mm
Autofocusing range: 1.5 mm
Image capture rate: 1 image/s
Image size: 1024 × 1024 pixels
Stage travel range: 100×70×10 (x×y×z)
Stage repeatability: 5 μm
HoloMonitor® M4 dimensions:
 290×200×190 mm (w×d×h)
Space required in incubator:
 400×270×190 mm (w×d×h)
Weight: 5.15 kg

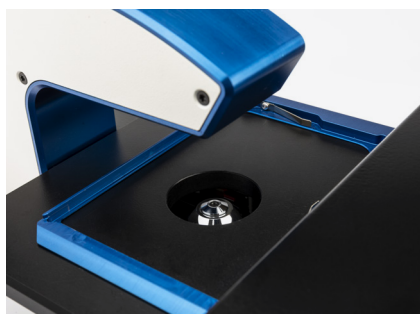
Computer Requirements

Operating system: Windows 10, 64-bit
Processor: Intel Core i7 (8th Gen)
Memory: 16 GB RAM (min 8 GB)
Hard drive: 512 GB SSD (min 256 GB)
Display: Full HD (min 1920×1080)
Other: 2 built-in USB ports

Sample and Environment

Cells: Adherent cell monolayer
Cell culture vessels*: 6-, 24-, 96-well, Petri, IBIDI
Operating temperature: 10-40°C
Operating humidity: Max 95%
For research use only.
 * For information about recommended vessels please visit phiab.com/holomonitor/holomonitor-system/

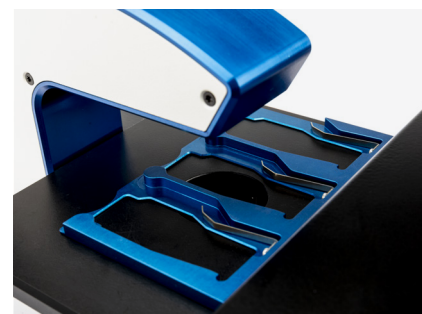
HoloMonitor® M4 Vessel Holders for Standard Cell Culture Vessels



One multi-well plate



4 Petri dishes simultaneously



3 microscopy slides simultaneously

HoloLids™ for Superior Image Quality



35mm Petri dish



6-well plate



24-well plate



96-well plate